

# Scottie Dog Mini Quilt



FOUNDATION PAPER PIECED PATTERN  
14 INCH DOG MINI QUILT

*By Juliet van der Heijden*



## About This Pattern

This pattern was originally designed as part of a series of three dog mini quilts which were featured in Love Patchwork and Quilting Magazine- A Scottie Dog, A Basset Hound and a Boxer. All three quilts were sewn using fabrics from Karen Lewis Blueberry Park Fabric, for Robert Kaufman.

This design is based upon an image by Ann Kallal of Maggie Ross Dogs. Ann graciously gave me her permission to use the design in my quilt pattern.

## Printing

- ◆ I find that it is best to print from an up-to-date pdf reader such as Adobe Acrobat Reader. Printing from a cell phone or tablet allows minimal control over scale and can lead to inconsistent sizing.
- ◆ This pattern has been presented on A4 paper, but it has been carefully formatted to ensure that it can be printed on letter paper without issue.
- ◆ I recommend printing page 7, checking that the 1 inch square is the correct size and only printing the remaining pattern pieces when you are satisfied that the printer settings are correct.
- ◆ If the printed pattern comes out small, look at your printer settings and ensure that you are printing at "actual size" or "100%". If you are printing on 8.5" x 11" letter paper, you DO NOT want to print using the setting "fit" or "shrink oversized pages". (Please note that the exact wording of the printer settings may vary according to the software that you are using).

## Preparations

- ◆ This pattern does not include instructions on how to paper piece. If you need any help or advice, you can find a series of tutorials on my website: <http://www.thetartankiwi.com/>.
- ◆ The colour diagram and colouring sheet are both mirror image. In this way, they refer directly to the printed side of the paper templates.
- ◆ Use the colouring sheets to try out different colour combinations and fabric placement, or use it to keep small children amused while you sew.
- ◆ Once you have decided on fabric placement, it can be a good idea to write notes on your pattern templates or colour them in.
- ◆ Ensure that you decrease your stitch size when paper piecing as this will make it easier to remove papers at the end. A stitch length of approximately 1.5 is suitable for most models of sewing machines.
- ◆ All seam allowances in this pattern are 1/4 inch.
- ◆ Pieces **A**, **B** and **C** come in two pieces. These must be assembled before sewing. I like to use a stationery grade glue-stick for this. Each join has been labelled for easy identification.
- ◆ When gluing pieces **A**, **B** and **C**, place the red join lines directly on top of each other. The paper will overlap on both sides of the line. If you have done it correctly, any lines that cross the red line will line up and the edges of the papers will be correctly aligned. Each join has been labelled to help with assembly.

## Fabric Requirements

The required fabric for any block may vary according to a number of factors. I would recommend you have more fabric available if you are a beginner, using a directional print or if you know that you cut generously.

	<b>Scottie Dog</b>
<b>Background fabric</b>	1/4 yard
<b>Body of Dog</b>	1/4 yard
<b>Batting</b>	16 inch square
<b>Backing Fabric</b>	18 inch square
<b>Binding Fabric</b>	2 strips 2 1/4 inch x wof

## Joining the Paper Pieces

Sew the pieces together in the following order:

A	→	B	→	C
ABC	→	D		
E	→	F		
ABCD	→	EF		
G	→	H		
ABCDEF	→	GH		
I	→	J		
ABCEDFGH	→	IJ		

When joining the pieces, accuracy is important. It can be a really good idea to initially sew the seam with large basting stitches. By so doing, you can check whether the pieces are accurately aligned. If they are not, the stitches are easy to remove and the paper will remain intact for several attempts at realignment. If the orientation is good, resew the seam with your normal short paper piecing stitches.

## Quilting and Finishing

Trim the fabric to the size of the paper templates.

Remove the papers from your block.

Press.

Create a quilt sandwich by placing your backing fabric face down on the desk. Place your batting in the centre of the backing fabric and the quilt top face up on top of the batting.

Baste using your preferred method. I like to use basting spray for mini quilts and equivalent small projects.

Quilt using the method of your choice. This mini quilt was straight line quilted with a walking foot.

## Copyright

All text and images © Juliet van der Heijden The Tartankiwi 2018. All rights reserved. No part of this pattern may be reproduced in any form without written consent of the author.

Permission to print or resize the pattern templates for personal use is granted.

## Share Your Work

I love to see the projects that you create with my patterns. If you share your work on Instagram, please use the the hashtag #tartankiwi.

Feel free to tag me too- @tartankiwi.

## Acknowledgements

As with all my patterns, this pattern has been thoroughly tested prior to release. I would like to thank the following people for the great job that they did:

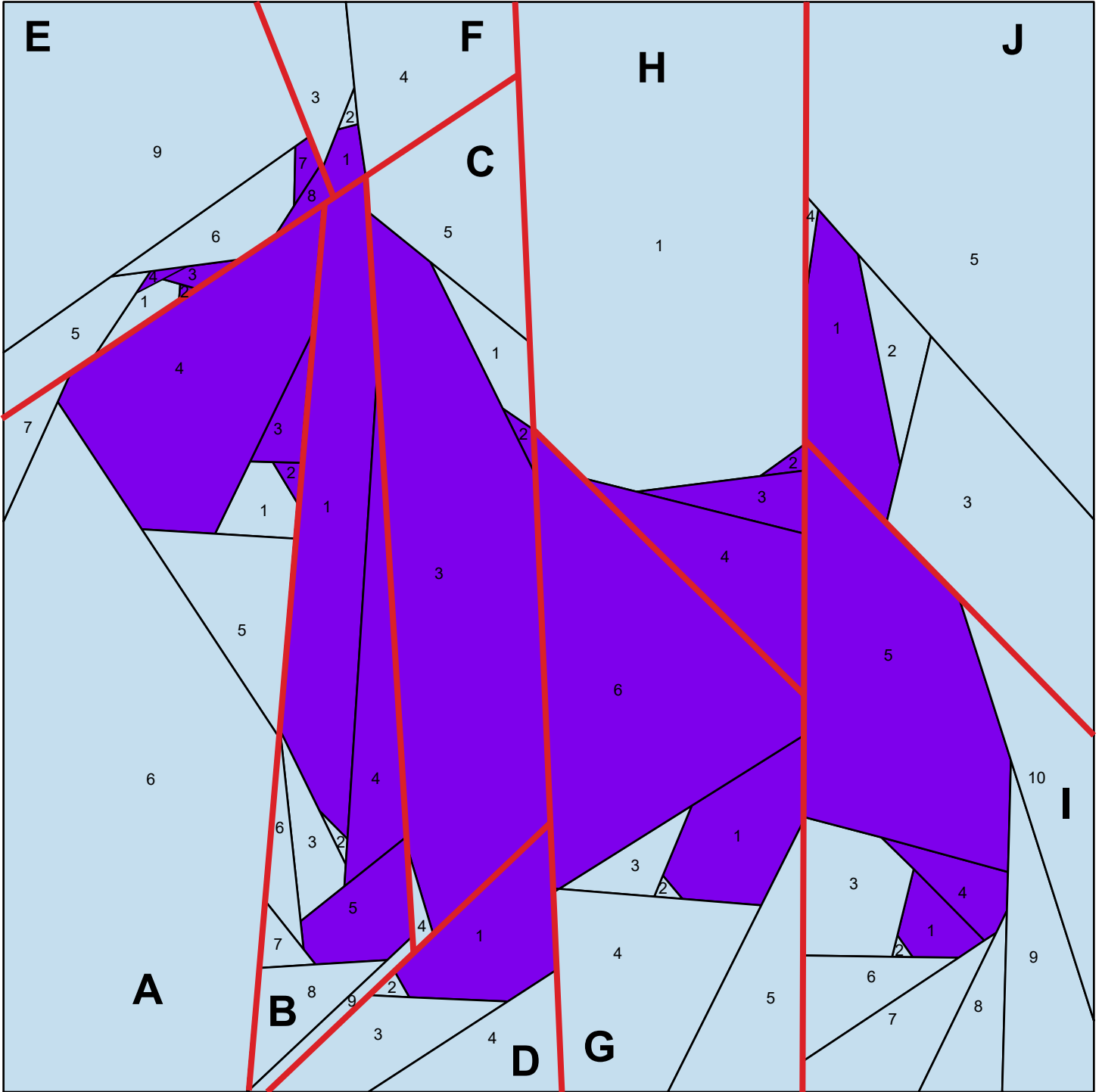
Joanne Harris, Raewyn Barge and Jo Avery

I take full responsibility for any mistakes that have slipped through the cracks. If you find a mistake, please contact me and I'll update the pattern so that others don't struggle.

Juliet@thetartankiwi.com

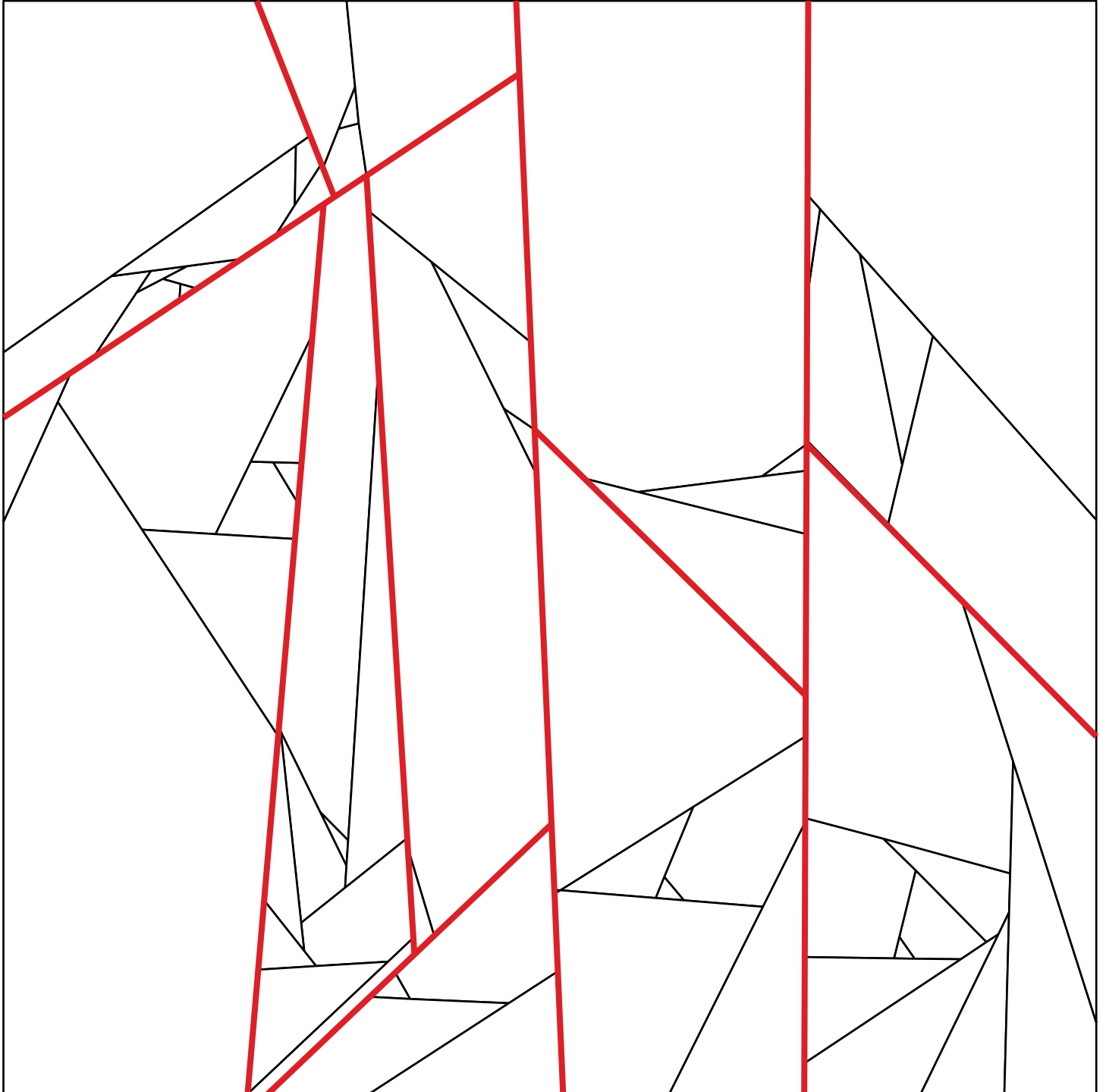
# Colour Diagram

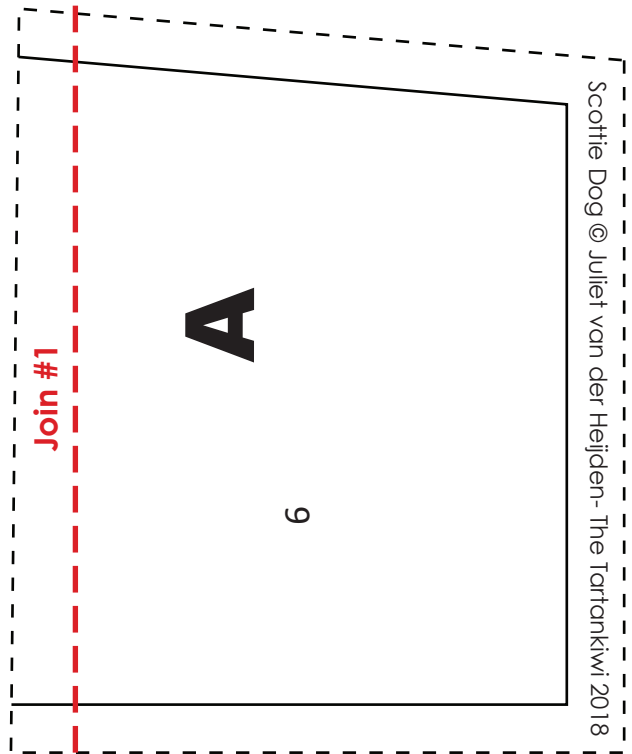
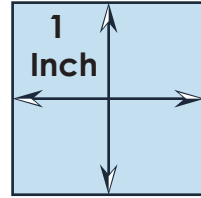
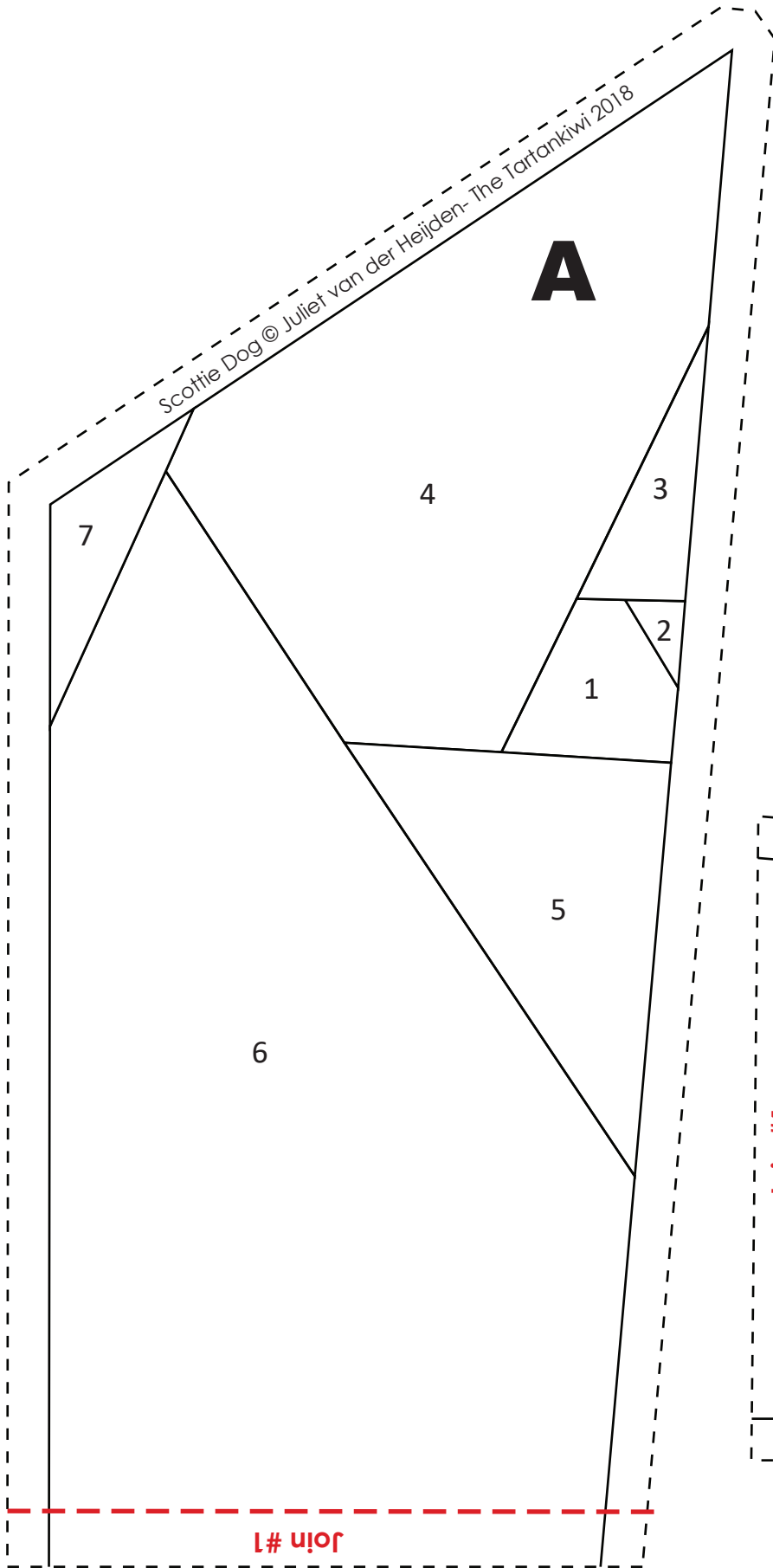
This diagram represents the printed pattern pieces. It is in mirror image to the finished block.

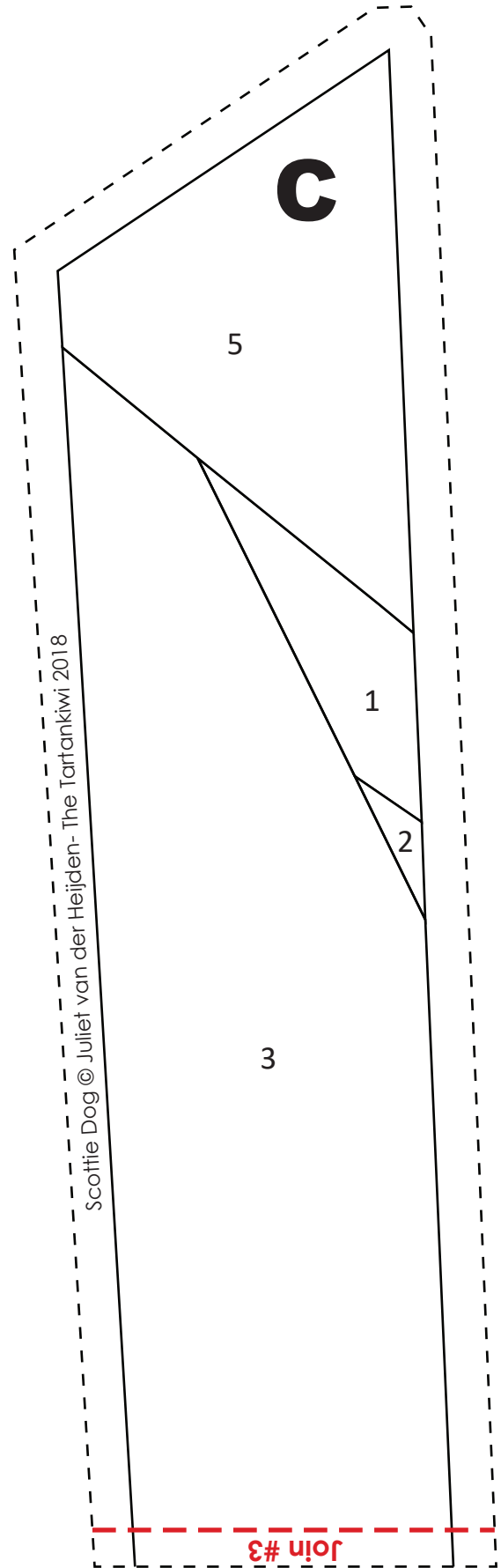
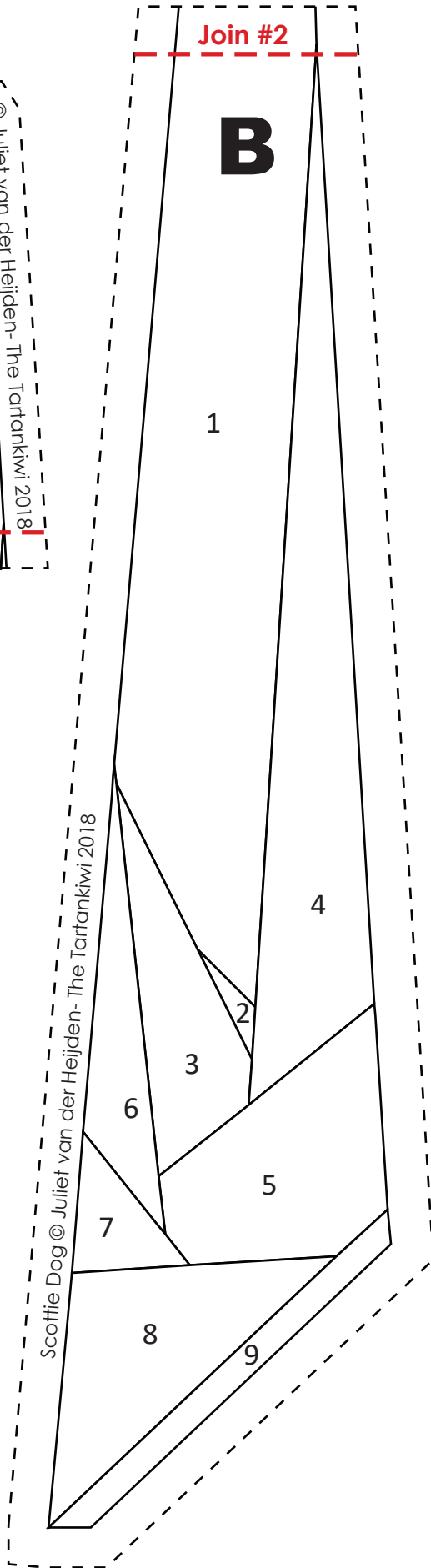
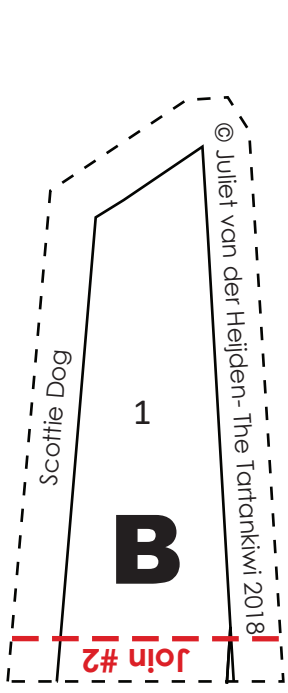


# Colouring Sheet

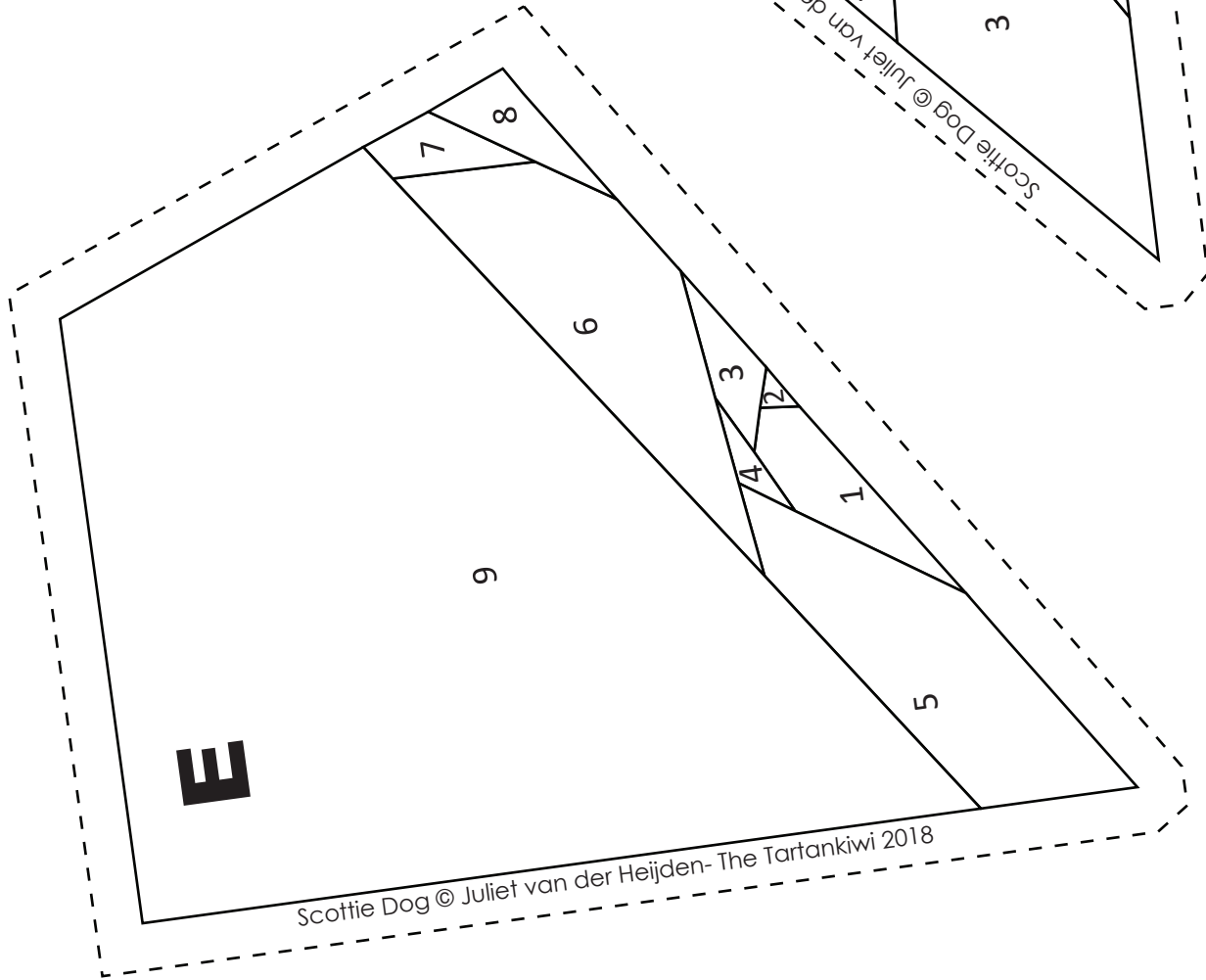
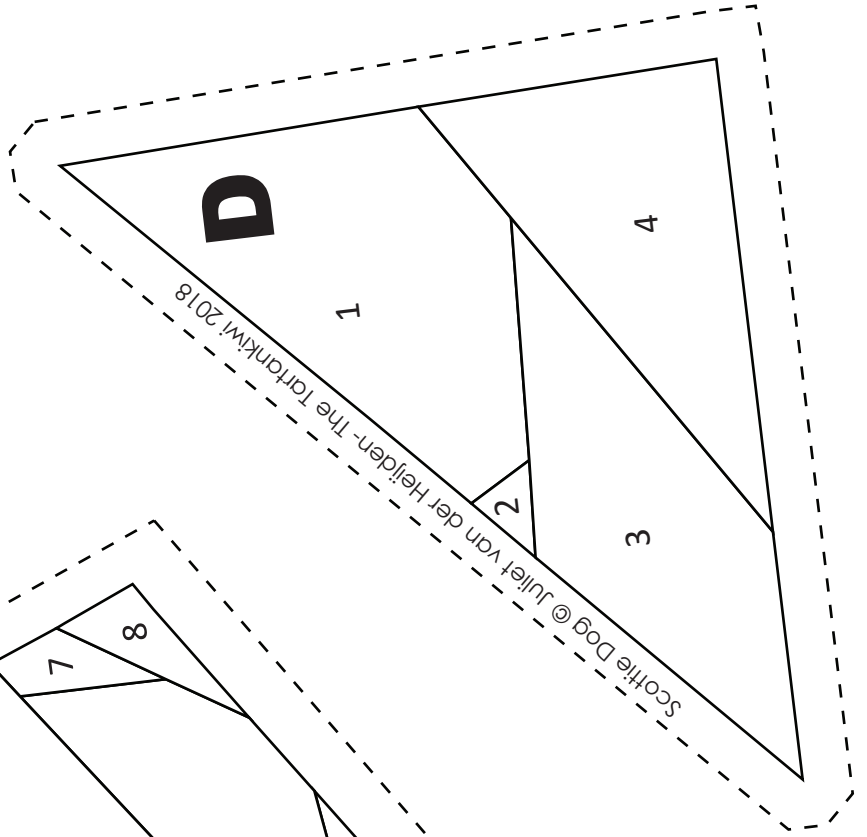
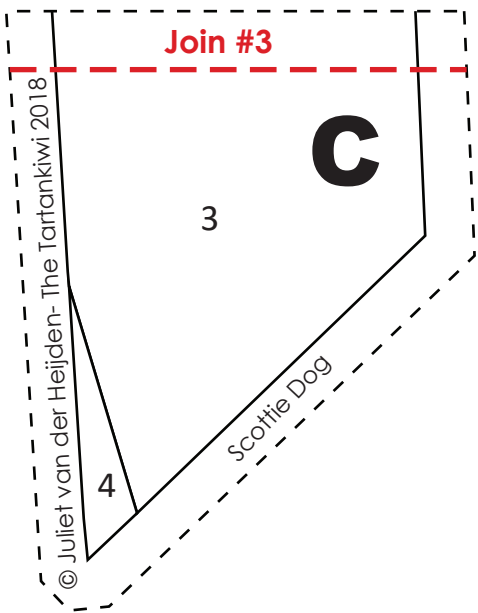
This diagram represents the printed pattern pieces. It is in mirror image to the finished block.

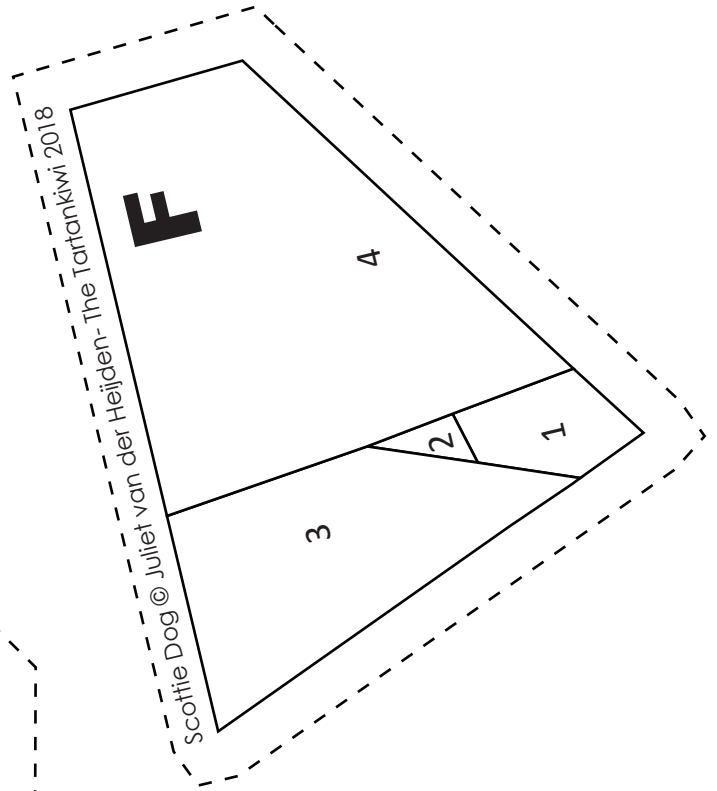
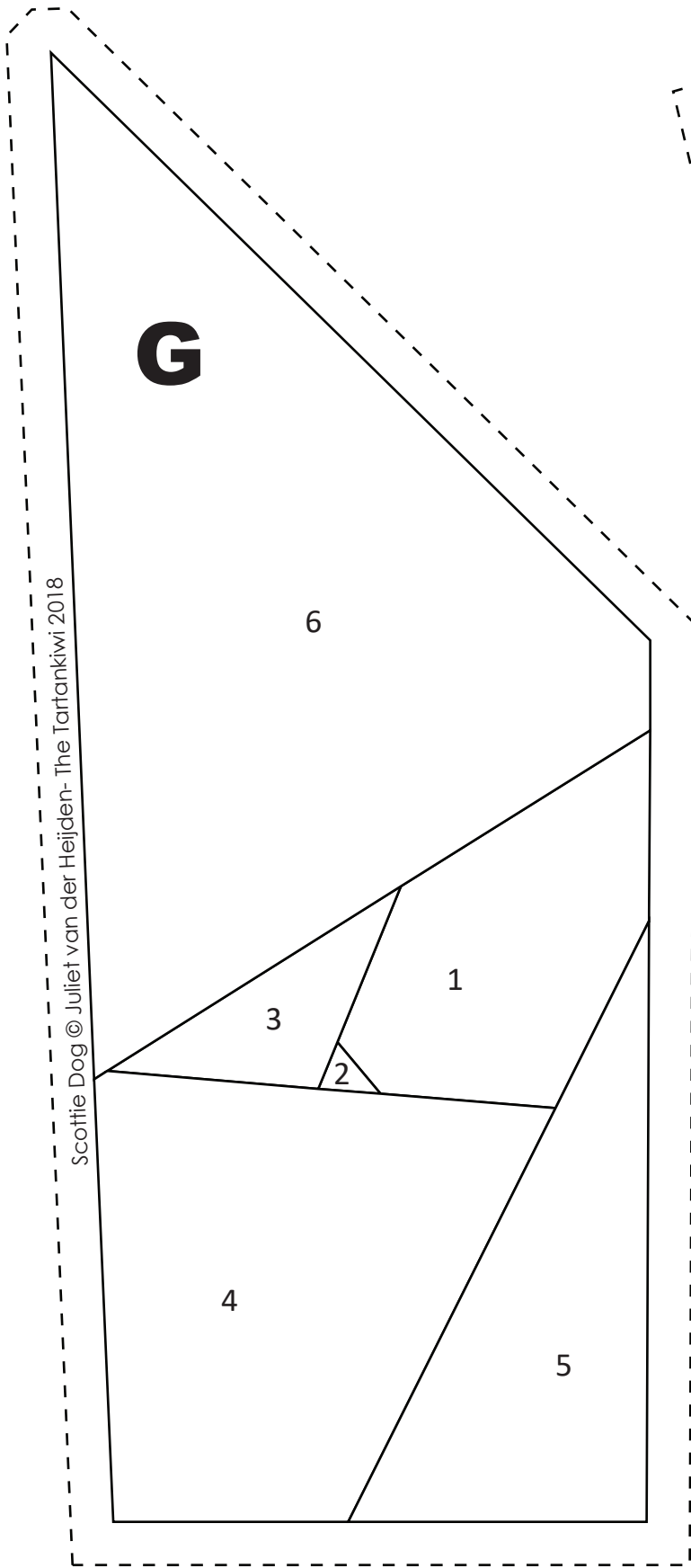


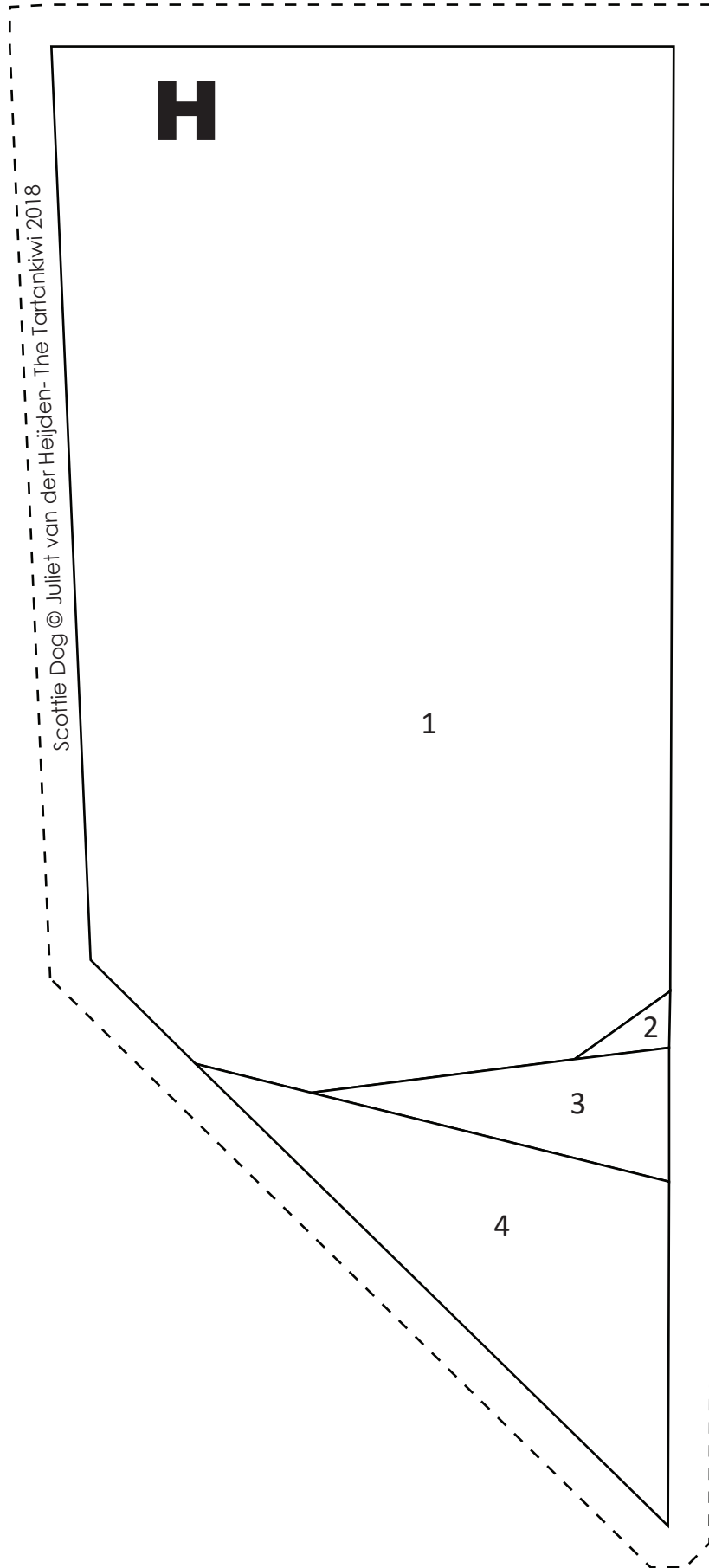


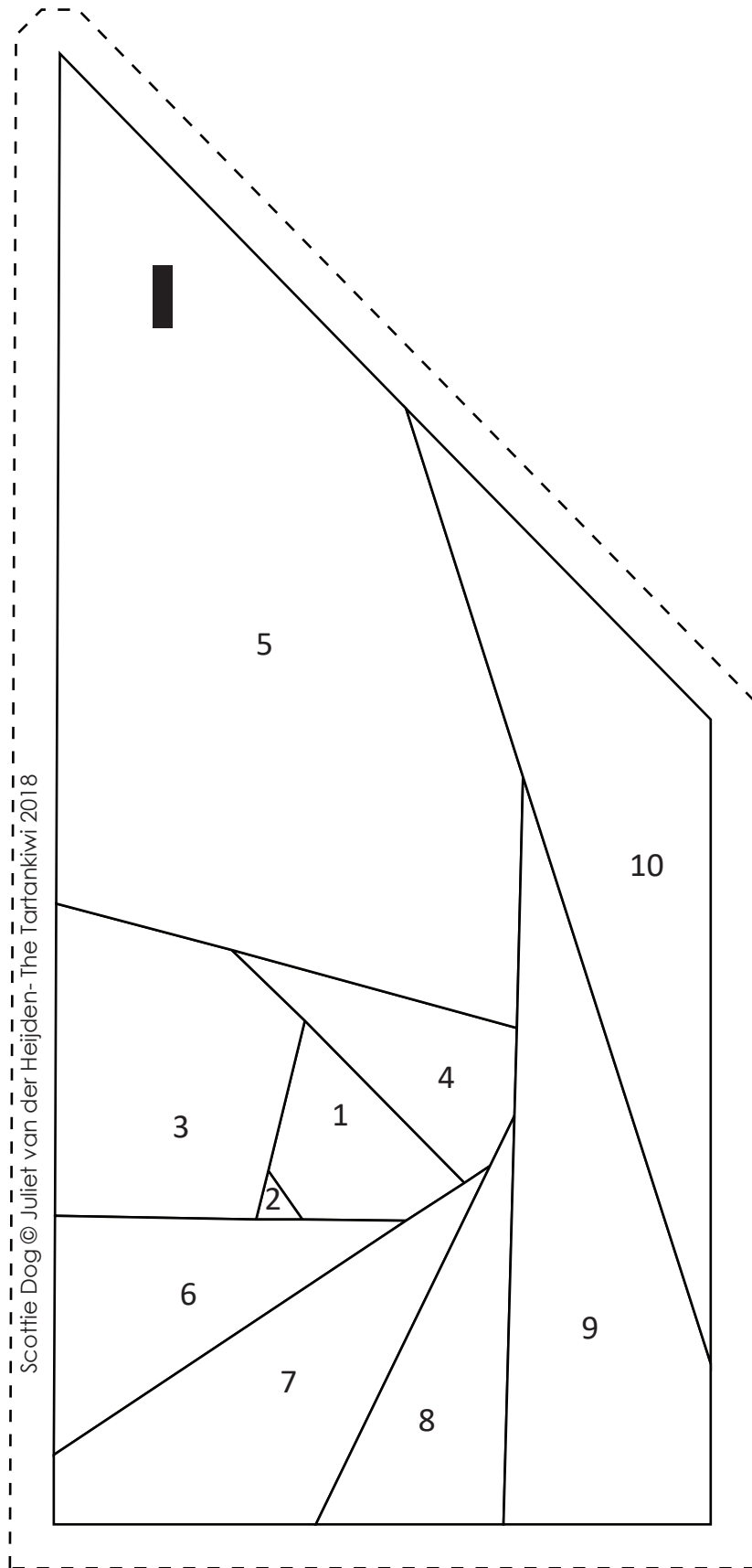




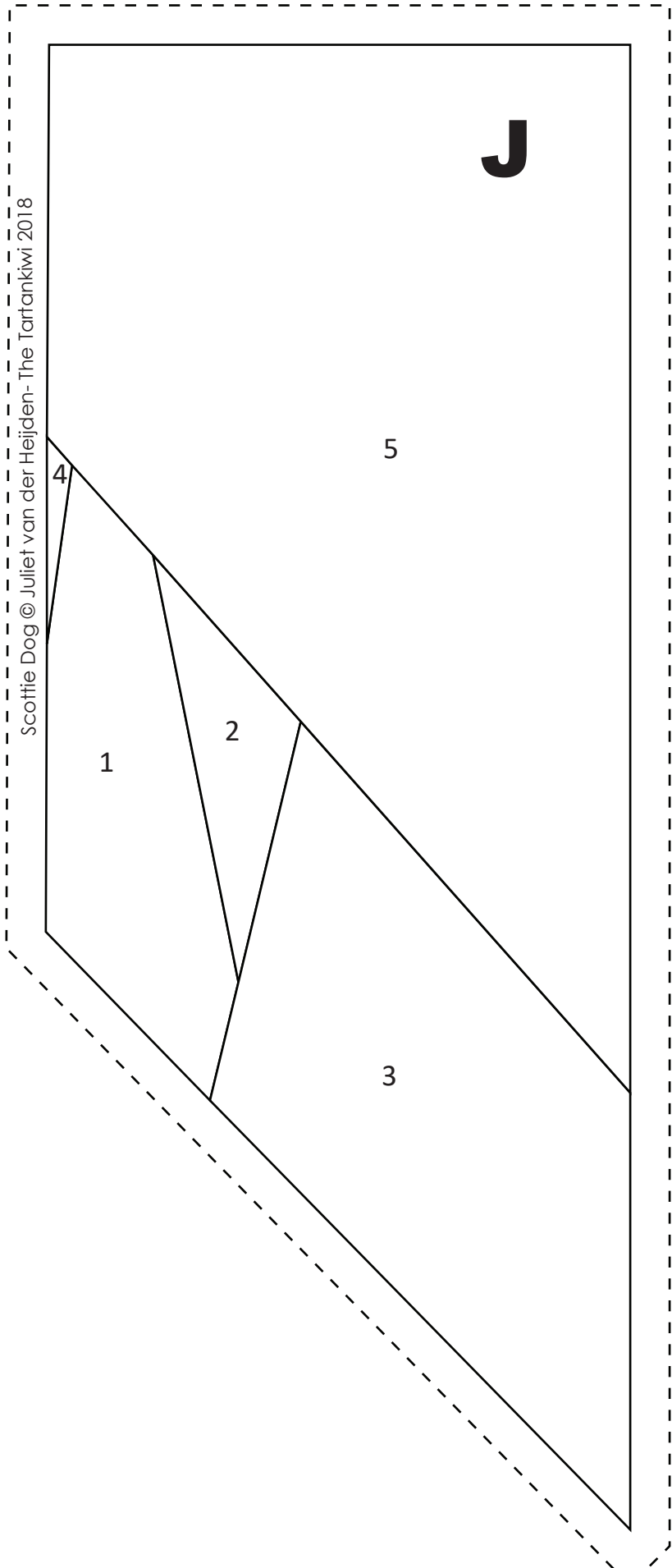








Scottie Dog © Juliet van der Heijden- The Tartankiwi 2018



Scottie Dog © Juliet van der Heijden- The Tairankiwi 2018